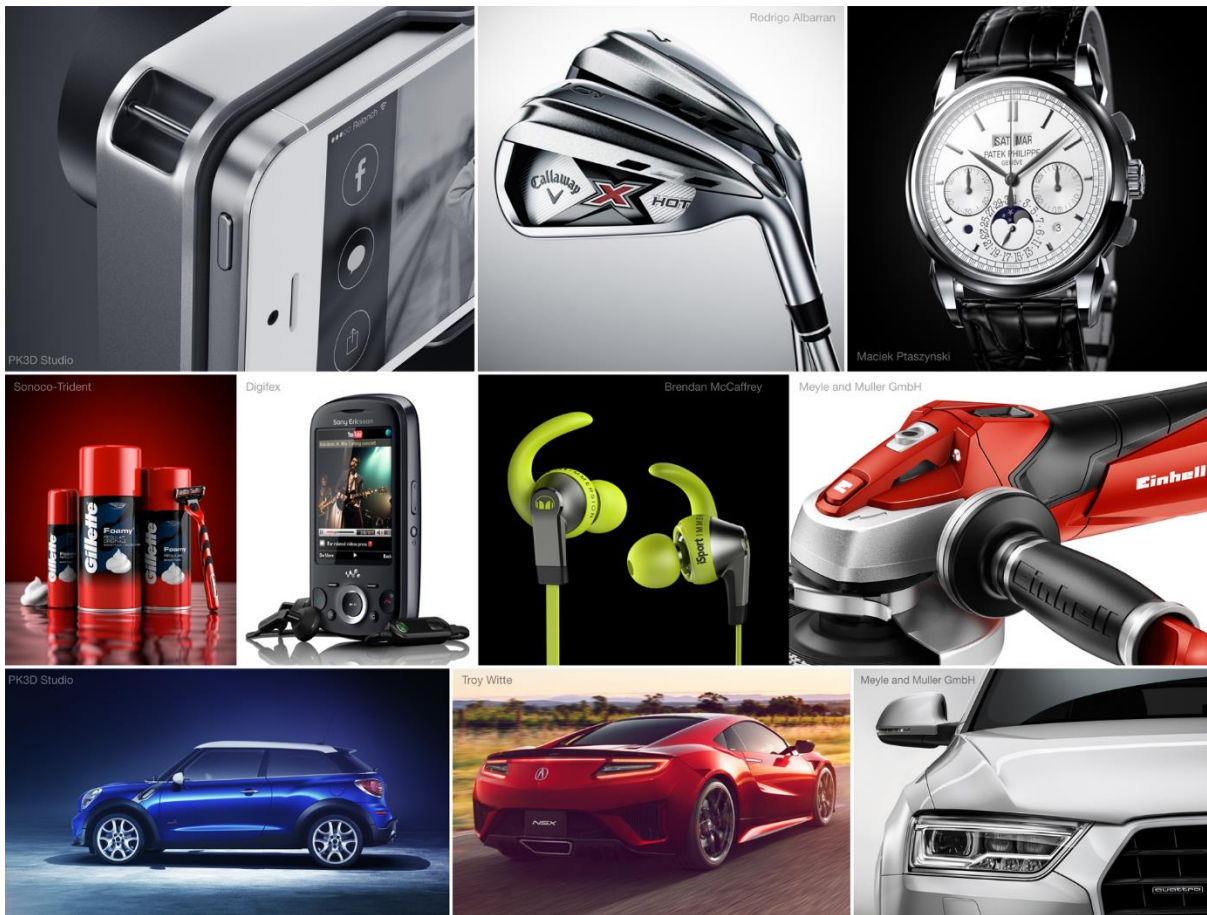


# HDR**LIGHT**STUDIO

FOR **VRED**



Create the perfect HDRI environment in minutes with HDR Light Studio. Lighting shots is now fast, precise and easy. Simply click on the model in VRED to position lights on a live HDRI map.



Images lit with HDR Light Studio

*“In the past, a HDRI was a closed format for us. We had to use it 'as it was'. With HDR Light Studio, these files are open and fully accessible - it's like painting with light! This tool gives us total creative freedom”*

**Tom Nowak, Lean Design**

## HDR Light Studio transforms your VRED lighting workflow:

- Studio Lighting
- Lighting to match a back-plate image
- Adding lights/adjustments to existing HDRI maps

## Key Benefits:

### Improve Image Quality

- Create perfect 'custom' HDRI lighting for your shot.
- Lights can be precisely positioned to enhance a product's form and materials.
- Photographic studio light sources bring realism to your images.

### Fast Lighting Workflow

- LightPaint – click on the 3D model in VRED to position lights on the HDRI map.
- Light directly on the camera view without navigating in 3D to position lights.
- HDRI map containing all lights will render faster than individual 3D lights.

## Key Features:

- LightPaint – click on the 3D model in VRED to position lights
- Create and edit HDRI maps in real-time
- Procedural lights, image based lights and procedural sky
- Includes a large library of HDRI light source captures
- HDR Light Studio project is stored in the VRED scene file



## How does HDR Light Studio work with VRED?

The model has materials applied, the camera view is setup, you are now ready to light...

- Start HDR Light Studio from the VRED environment

- Load an existing HDRI map to edit, or start with a blank canvas
- Add a new lights in HDR Light Studio
- Click on the 3D model in VRED to position lights
- To finish, HDR Light Studio generates a high-res HDRI map for the VRED environment
- The VRED scene is now ready for final rendering

### **Requirements:**

- Software delivery via internet download
- Internet connection required for license activation
- HDR Light Studio software requires approx. 200MB disc space
- Preset light content requires approx. 6.2GB disc space
- CPU based, no special graphics card required
- Compatible with:
  - VRED 2014, 2015, 2016 (Windows only)
  - VRED 2017, 2018 (Windows and OSX)

### **Try**

Take your free 15 day trial of HDR Light Studio for VRED here: [www.lightmap.co.uk/try](http://www.lightmap.co.uk/try)

### **Buy**

#### **HDR Light Studio for VRED license types:**

1 Year Subscription - Node Locked: £340 / €455 / \$515

1 Year Subscription - Floating: £590 / €805 / \$890

Permanent - Node Locked (inc. 1 year maintenance): £890 / €1,210 / \$1,290

Permanent - Floating – (inc. 1 year maintenance): £1,390 / €1,895 / \$2,090

*Kindly contact your reseller for a special bundle pricing if you would like to use HDR Light Studio with additional 3D software - i.e Maya, 3ds Max, Cinema 4D, MODO, LightWave3D, Houdini, Maxwell Studio, Rhino, SOLIDWORKS Visualize, DeltaGen.*